

Chestnut Blight Market access information - DEPI

An Order regarding the movement of chestnut blight host materials in north-east Victoria was declared in March 2011.

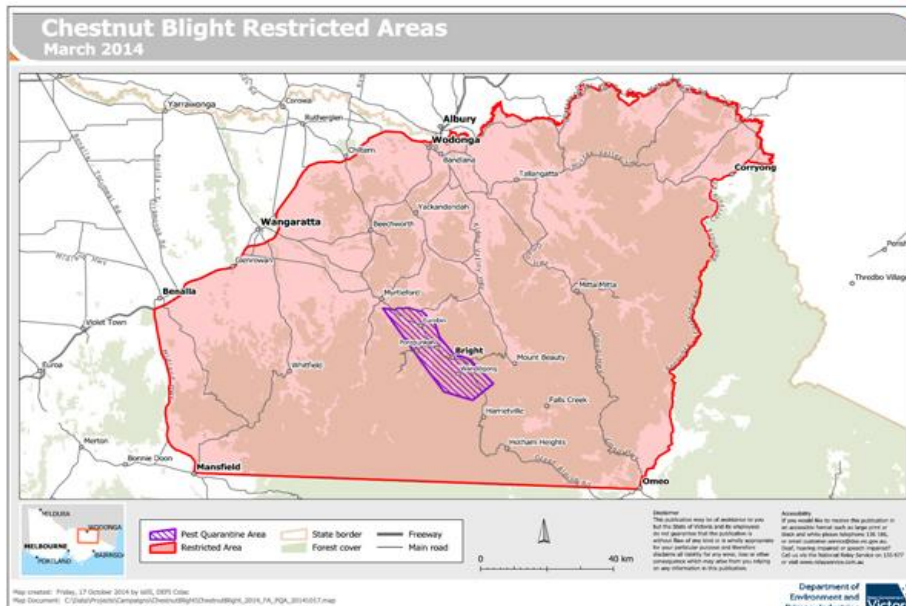
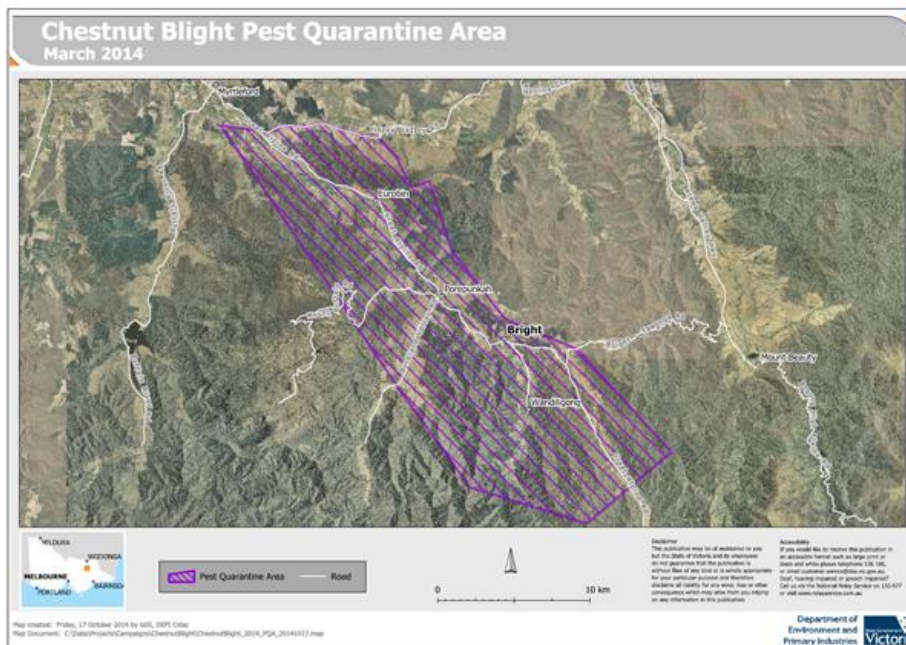
The Order specifies two control areas:

- The existing Restricted Area (RA).
- A Pest Quarantine Area (PQA) which covers the Ovens Valley and lies within the RA.

The Order places restrictions on the movement of chestnut blight host materials i.e.

- chestnut (*Castanea* sp.) plant materials;
- oak (*Quercus* sp.) plant materials; and
- associated equipment and used packaging.

Plant materials include bare-rooted and potted plants, budwood and rootstock, but not nuts. The Chestnut Blight Restricted Area (shaded in red) and Pest Quarantine Area (shaded in purple) are shown on the maps below:



The Chestnut Blight Restricted Area is bound by the towns of Benalla, Mansfield, Omeo, Corryong and Wodonga. Within this area, the Pest Quarantine Area lies on either side of the Great Alpine Road between Myrtleford and Harrietville.

Movement permits

Permits can be obtained which allow host material movement subject to certain requirements. The requirements are:

For infected properties:

- Plant material may not be removed from the property.
- Fresh chestnuts may not be moved from the property. Movement of dried nuts can be made under a permit.
- Equipment and used packaging may be moved from the property following disinfection, under a permit.

For other properties in the Pest Quarantine Area:

- Movement of plant material requires a permit specifying that the plant material and mother stock has been inspected and found to be free of chestnut blight.
- No movement restrictions apply to either fresh or dried nuts.
- Movement of equipment (including bins) requires a permit specifying that the material has been disinfected.

For properties in the Restricted Area:

- Movement of plant material requires a permit specifying that the plant material and mother stock has been inspected and found to be free of chestnut blight.
- No movement restrictions apply to either fresh or dried nuts.
- No movement restrictions apply to equipment and used packaging.

Obtaining a permit

Permits will only be issued for plant material after the plants and the property from which the mother stock originated has been inspected and found free of chestnut blight.

After a successful inspection, a letter confirming the absence of the disease will be provided together with the relevant permit.

Enquiries about permits should be directed to DEPI Ovens on (03) 5731 1222.

Reporting

The Order requires that landholders within the RA and the PQA must notify DEPI if they find suspected chestnut blight symptoms - phone **136 186**.

- Please provide the type of plant and its location.
- Do not collect samples of suspected chestnut blight, as this could spread the disease.